

CANARY RIVERSIDE



# EATON HOUSE



38 Westferry Circus  
Canary Wharf  
London E14

# EATON HOUSE

38 Westferry Circus, Canary Wharf, London E14

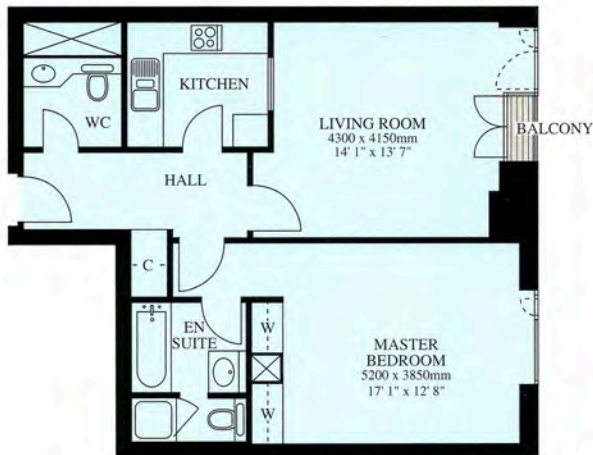
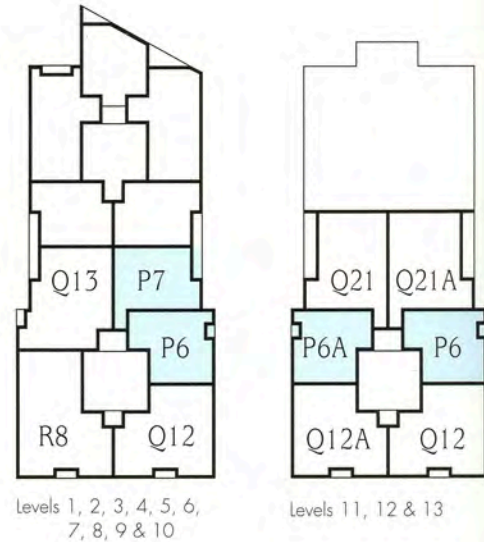
## 1 Bedroom apartment Type P6/P6A

### Availability

P6 Apartment number	Level
15	1st floor
25	2nd floor
35	3rd floor
45	4th floor
55	5th floor
65	6th floor
75	7th floor
85	8th floor
95	9th floor
105	10th floor
116	11th floor
126	12th floor
136	13th floor

P6A Apartment number	Level
113 - is handed	11th floor
123 - is handed	12th floor
133 - is handed	13th floor

Total floor area	Balcony area
74.1 sq m / 798 sq ft	0.9 sq m / 10 sq ft

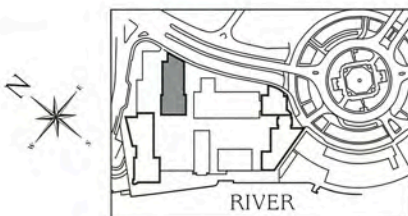


## 1 Bedroom apartment Type P7

### Availability

Apartment number	Level
14	1st floor
24	2nd floor
34	3rd floor
44	4th floor
54	5th floor
64	6th floor
74	7th floor
84	8th floor
94	9th floor
104	10th floor

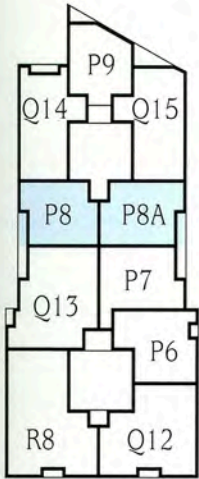
Total floor area	Balcony area
79.8 sq m / 859 sq ft	4.8 sq m / 52 sq ft



Plans are not to scale. Areas are measured to centre line of party walls/curtain wall. Room dimensions are taken to face of wall and to the back of wardrobes. Key plans are indicative only.

# EATON HOUSE

38 Westferry Circus, Canary Wharf, London E14



Levels 1, 2, 3, 4 & 5

## 1 Bedroom apartment Type P9

### Availability

Apartment number  
14A  
24A  
34A  
44A  
54A

Level  
1st floor  
2nd floor  
3rd floor  
4th floor  
5th floor

Total floor area  
70.0 sq m / 754 sq ft

Balcony area  
3.3 sq m / 36 sq ft



## 1 Bedroom apartment Type P8/P8A

### Availability

P8 Apartment number  
12A  
22A  
32A  
42A  
52A

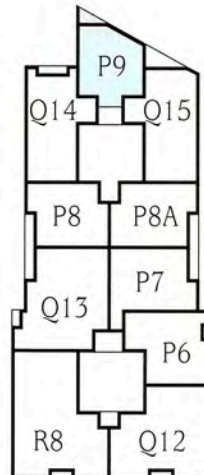
Level  
1st floor  
2nd floor  
3rd floor  
4th floor  
5th floor

P8A Apartment number  
11A - is handed  
21A - is handed  
31A - is handed  
41A - is handed  
51A - is handed

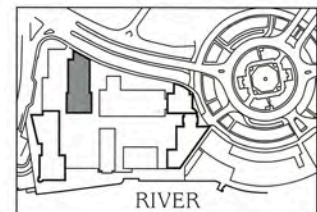
Level  
1st floor  
2nd floor  
3rd floor  
4th floor  
5th floor

Total floor area  
72.3 sq m / 778 sq ft

Balcony area  
4.8 sq m / 52 sq ft



Levels 1, 2, 3, 4 & 5



# EATON HOUSE

38 Westferry Circus, Canary Wharf, London E14

## 2 Bedroom apartment Type Q11/Q11A

### Availability

Q11 Apartment number  
G2 - is handed

Level  
Ground floor

Total floor area  
137.8 sq m / 1,483 sq ft

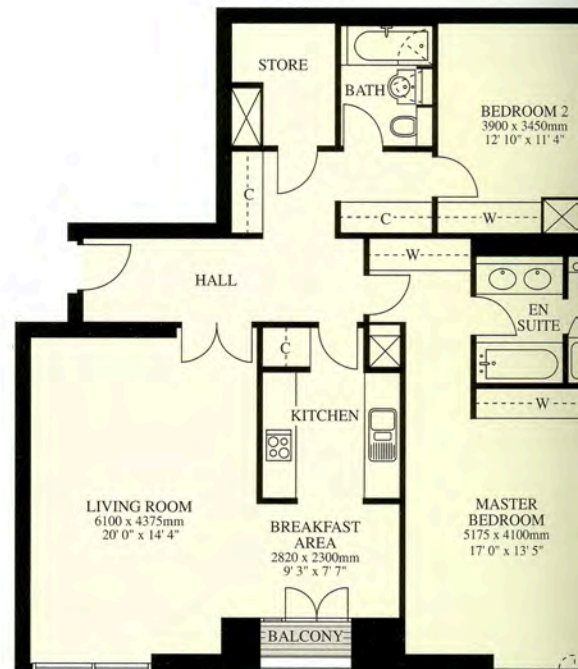
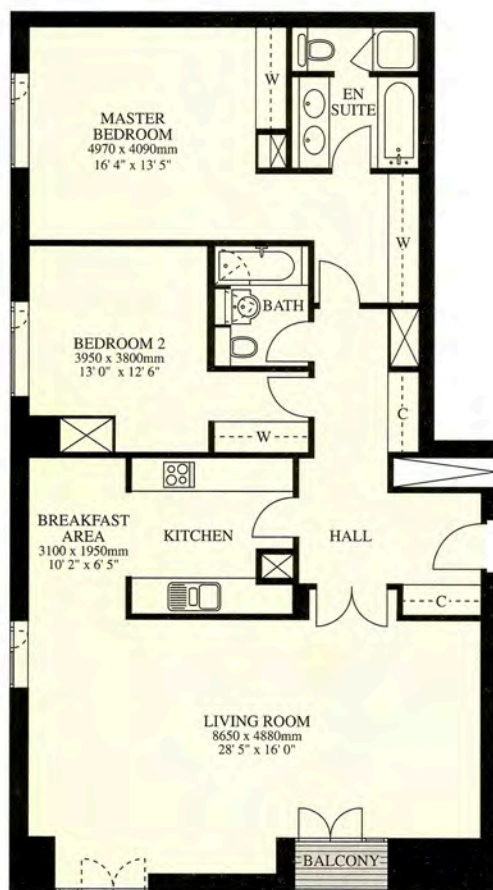
Balcony area  
1.6 sq m / 17 sq ft

Q11A Apartment number  
G1

Level  
Ground floor

Total floor area  
133.5 sq m / 1,437 sq ft

Balcony area  
1.6 sq m / 17 sq ft



## 2 Bedroom apartment Type Q12/Q12A

### Availability

Q12 Apartment number

- 11
- 21
- 31
- 41
- 51
- 61
- 71
- 81
- 91
- 101
- 111
- 121
- 131

Level

- 1st floor
- 2nd floor
- 3rd floor
- 4th floor
- 5th floor
- 6th floor
- 7th floor
- 8th floor
- 9th floor
- 10th floor
- 11th floor
- 12th floor
- 13th floor

Total floor area  
125.9 sq m / 1,355 sq ft

Balcony area  
2.4 sq m / 26 sq ft

Q12A Apartment number

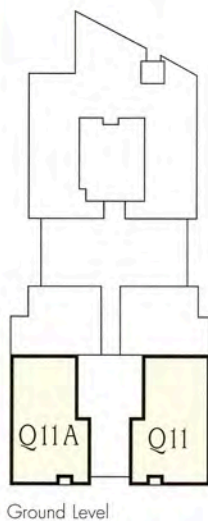
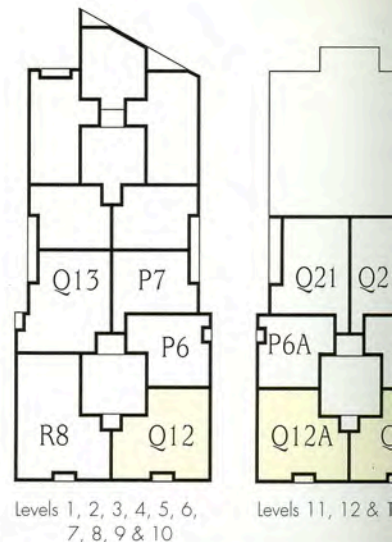
- 112 - is handed
- 122 - is handed
- 132 - is handed

Level

- 11th floor
- 12th floor
- 13th floor

Total floor area  
124.7 sq m / 1,342 sq ft

Balcony area  
2.4 sq m / 26 sq ft



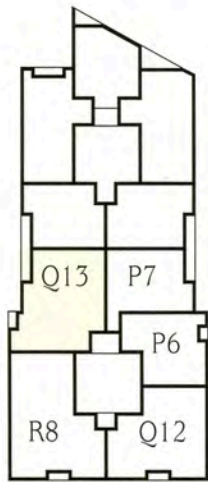
Ground Level



Plans are not to scale. Areas are measured to centre line of party walls/curtain wall. Room dimensions are taken to face of wall and to the back of wardrobes. Key plans are indicative only.

# EATON HOUSE

38 Westferry Circus, Canary Wharf, London E14



Levels 1, 2, 3, 4, 5, 6,  
7, 8, 9 & 10

## 2 Bedroom apartment Type Q14

### Availability

Apartment number  
13A  
23A  
33A  
43A  
53A

Level  
1st floor  
2nd floor  
3rd floor  
4th floor  
5th floor

Total floor area  
98.6 sq m / 1,061 sq ft

Balcony area  
1.8 sq m / 19 sq ft



## 2 Bedroom apartment Type Q13

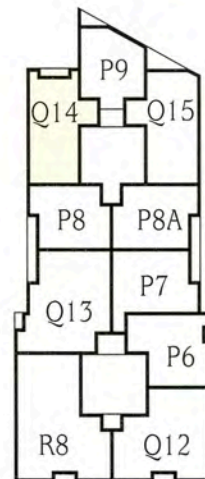
### Availability

Apartment number  
13  
23  
33  
43  
53  
63  
73  
83  
93  
103

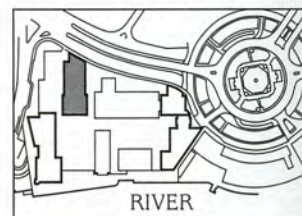
Level  
1st floor  
2nd floor  
3rd floor  
4th floor  
5th floor  
6th floor  
7th floor  
8th floor  
9th floor  
10th floor

Total floor area  
121.0 sq m / 1,302 sq ft

Balcony area  
6.2 sq m / 67 sq ft



Levels 1, 2, 3, 4 & 5



Plans are not to scale. Areas are measured to centre line of party walls/curtain wall. Room dimensions are taken to face of wall and to the back of wardrobes. Key plans are indicative only.

# EATON HOUSE

38 Westferry Circus, Canary Wharf, London E14

## 2 Bedroom apartment Type Q15

### Availability

Apartment number

15A

25A

35A

45A

55A

Level

1st floor

2nd floor

3rd floor

4th floor

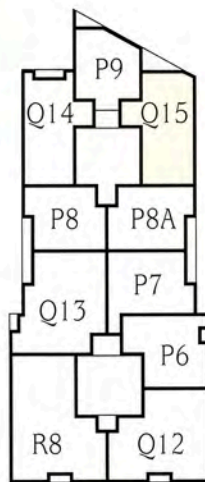
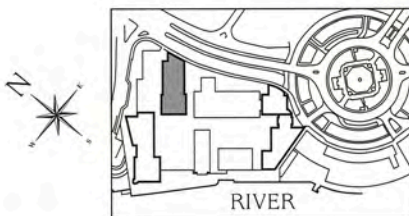
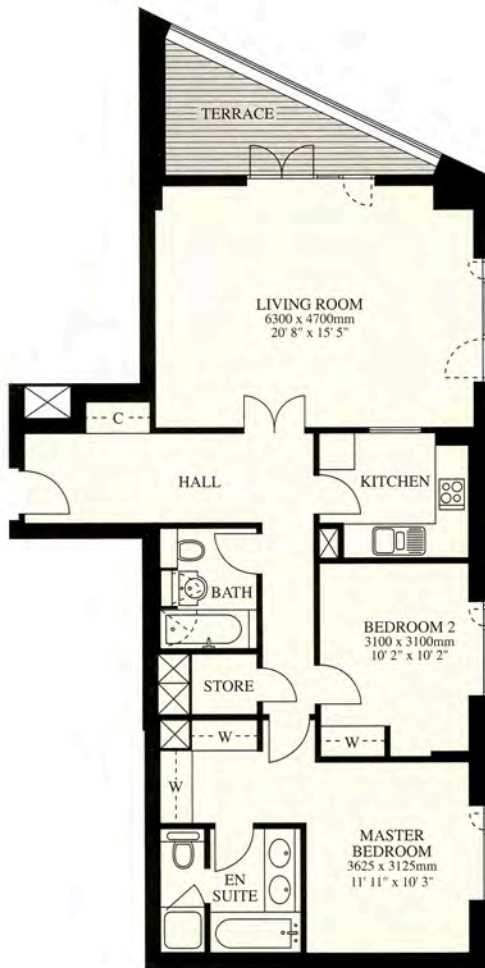
5th floor

Total floor area

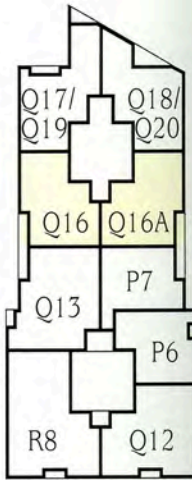
103.1 sq m / 1,110 sq ft

Terrace area

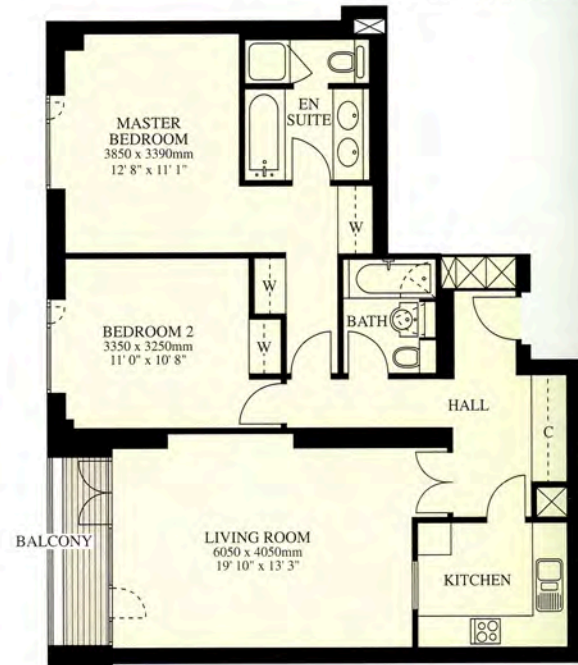
9.2 sq m / 99 sq ft



Levels 1, 2, 3, 4 & 5



Levels 6, 7, 8, 9 & 10



## 2 Bedroom apartment Type Q16/Q16A

### Availability

Q16 Apartment number

62A

72A

82A

92A

102A

Q16A Apartment number

61A - is handed

71A - is handed

81A - is handed

91A - is handed

101A - is handed

Level

6th floor

7th floor

8th floor

9th floor

10th floor

Level

6th floor

7th floor

8th floor

9th floor

10th floor

Total floor area

99.4 sq m / 1,070 sq ft

Balcony area

4.8 sq m / 52 sq ft

Plans are not to scale. Areas are measured to centre line of party walls/curtain wall. Room dimensions are taken to face of wall and to the back of wardrobes. Key plans are indicative only.

# EATON HOUSE

38 Westferry Circus, Canary Wharf, London E14

## 2 Bedroom apartment Type Q18

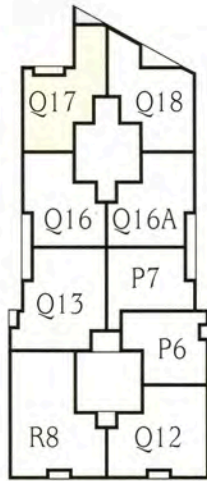
### Availability

Apartment number  
64A  
74A  
84A

Level  
6th floor  
7th floor  
8th floor

Total floor area  
106.7 sq m / 1,149 sq ft

Balcony area  
12.2 sq m / 131 sq ft



Levels 6, 7 & 8



## 2 Bedroom apartment Type Q17

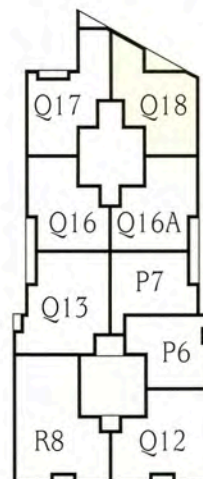
### Availability

Apartment number  
63A  
73A  
83A

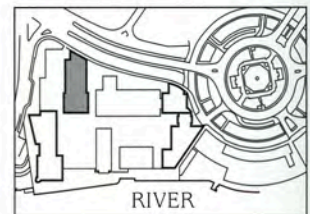
Level  
6th floor  
7th floor  
8th floor

Total floor area  
110.0 sq m / 1,184 sq ft

Balcony area  
4.0 sq m / 43 sq ft



Levels 6, 7 & 8



# EATON HOUSE

38 Westferry Circus, Canary Wharf, London E14

## 2 Bedroom apartment Type Q19

### Availability

Apartment number  
93A

Level  
9th floor

Total floor area  
100.4 sq m / 1,081 sq ft

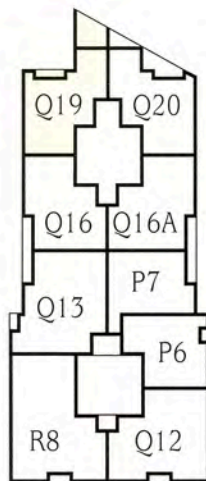
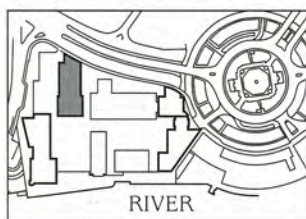
Balcony/Terrace area  
14.4 sq m / 155 sq ft

Apartment number  
103A

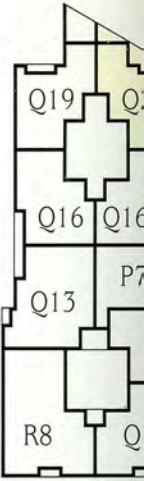
Level  
10th floor

Total floor area  
100.4 sq m / 1,081 sq ft

Balcony area  
1.8 sq m / 19 sq ft



Levels 9 & 10



Levels 9 & 10



## 2 Bedroom apartment Type Q20

### Availability

Apartment number  
94A

Level  
9th floor

Total floor area  
101.6 sq m / 1,094 sq ft

Balcony/Terrace area  
16.4 sq m / 177 sq ft

Apartment number  
104A

Level  
10th floor

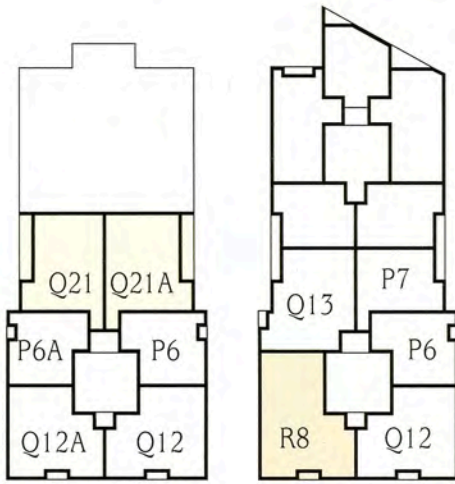
Total floor area  
101.6 sq m / 1,094 sq ft

Plans are not to scale. Areas are measured to centre line of party walls/curtain wall. Room dimensions are taken to face of wall and to the back of wardrobes. Key plans are indicative only.



# EATON HOUSE

38 Westferry Circus, Canary Wharf, London E14



Levels 11, 12 & 13

Levels 1, 2, 3, 4, 5, 6,  
7, 8, 9 & 10

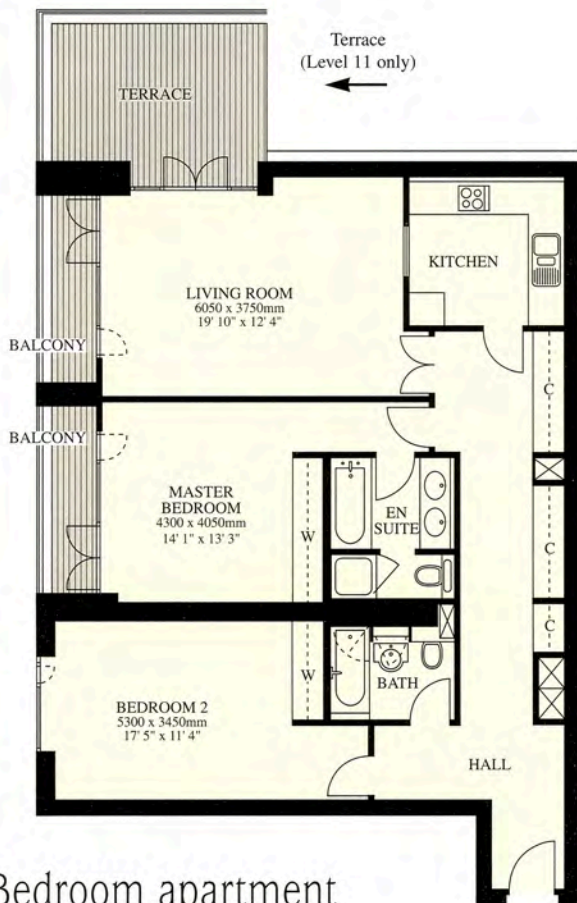
## 3 Bedroom apartment Type R8

### Availability

Apartment number	Level
12	1st floor
22	2nd floor
32	3rd floor
42	4th floor
52	5th floor
62	6th floor
72	7th floor
82	8th floor
92	9th floor
102	10th floor

Total floor area  
157.2 sq m / 1,692 sq ft

Balcony area  
1.3 sq m / 14 sq ft



## 2 Bedroom apartment Type Q21/Q21A

### Availability

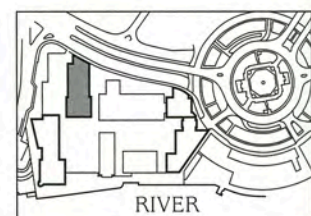
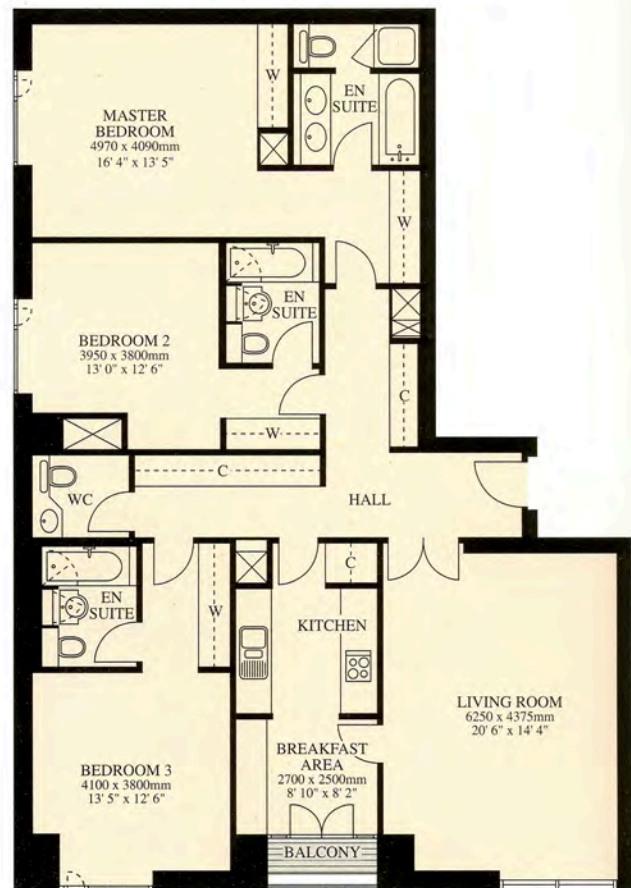
Q21 Apartment number	Level
114*	11th floor
124	12th floor
134	13th floor

Q21A Apartment number	Level
115 - is handed*	11th floor
125 - is handed	12th floor
135 - is handed	13th floor

Total floor area  
117.6 sq m / 1,266 sq ft

Balcony area  
11.0 sq m / 118 sq ft

\*Balcony/Terrace area for apartments 114 & 115 is 26.9 sq m / 290 sq ft



Plans are not to scale. Areas are measured to centre line of party walls/curtain wall. Room dimensions are taken to face of wall and to the back of wardrobes. Key plans are indicative only.

# EATON HOUSE

38 Westferry Circus, Canary Wharf, London E14

## 4 Bedroom Penthouse Type T3/T4

### Availability

T3 Apartment number  
141 - is handed

Level  
14th/15th floor

Total floor area  
341.2 sq m / 3,673 sq ft

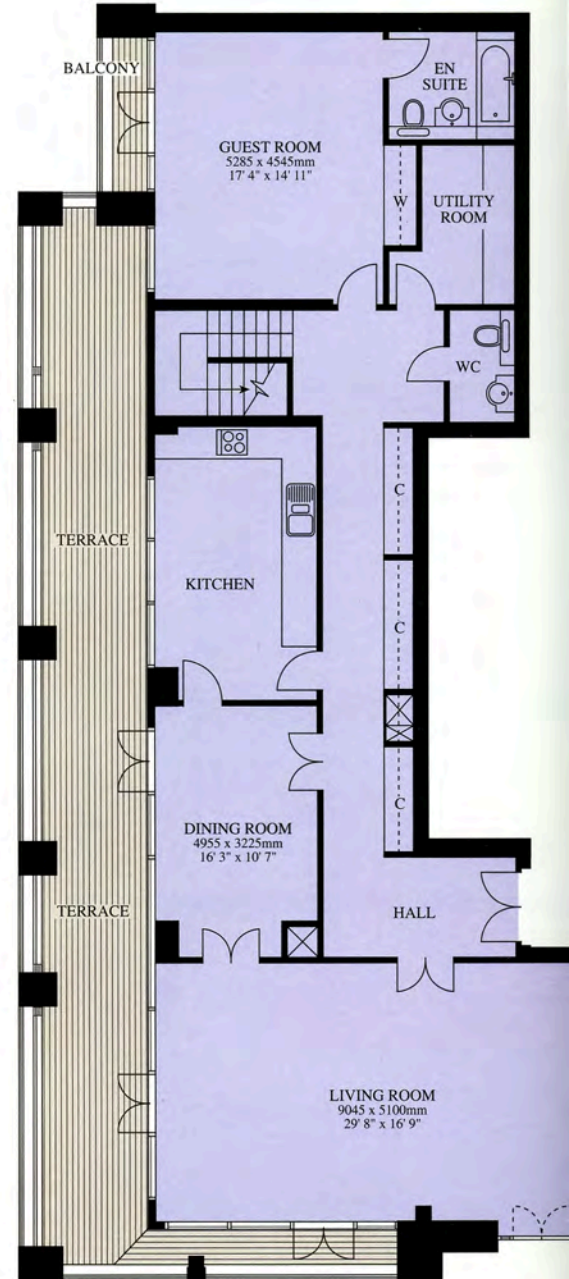
Balcony/Terrace area  
62.8 sq m / 676 sq ft

T4 Apartment number  
142

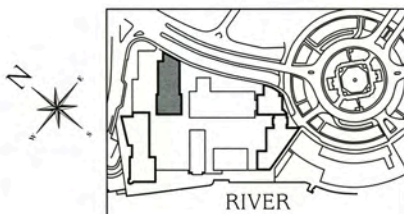
Level  
14th/15th floor

Total floor area  
341.9 sq m / 3,680 sq ft

Balcony/Terrace area  
62.8 sq m / 676 sq ft



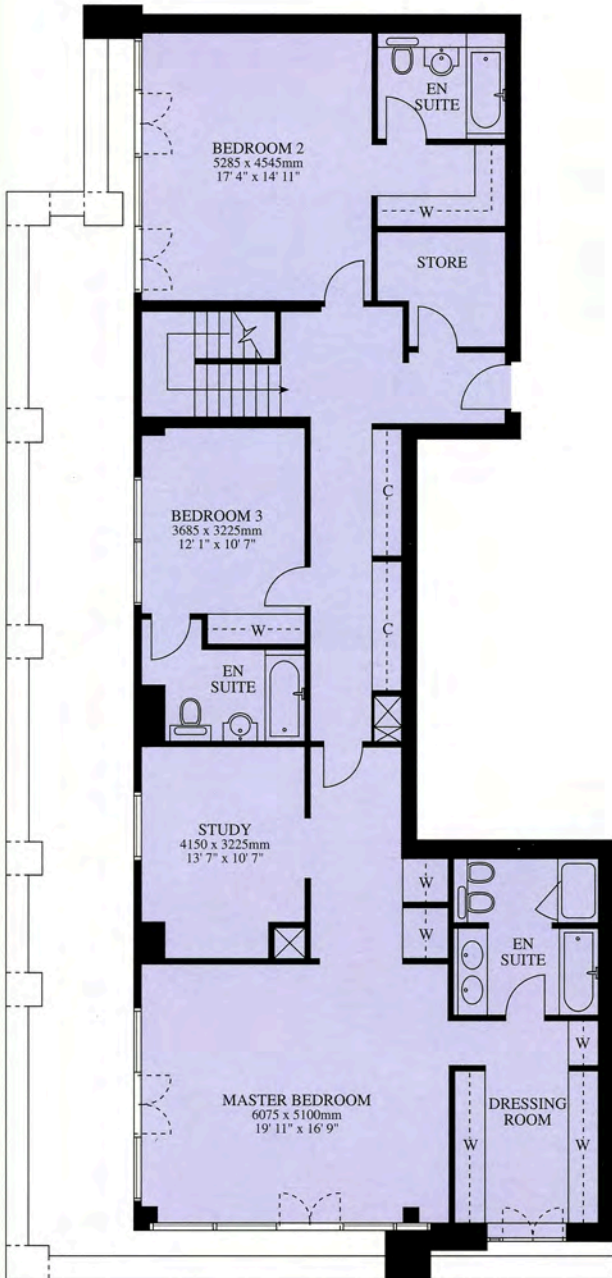
Lower Floor



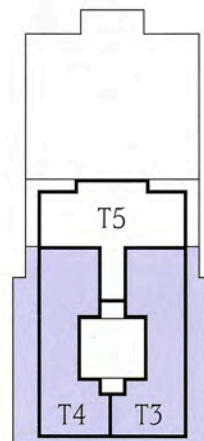
Plans are not to scale. Areas are measured to centre line of party walls/curtain wall. Room dimensions are taken to face of wall and to the back of wardrobes. Key plans are indicative only.

# EATON HOUSE

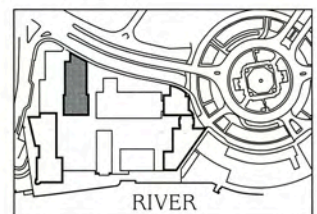
38 Westferry Circus, Canary Wharf, London E14



Upper Floor



Levels 14 & 15



Plans are not to scale. Areas are measured to centre line of party walls/curtain wall. Room dimensions are taken to face of wall and to the back of wardrobes. Key plans are indicative only.

# EATON HOUSE

38 Westferry Circus, Canary Wharf, London E14

## 4 Bedroom Penthouse Type T5

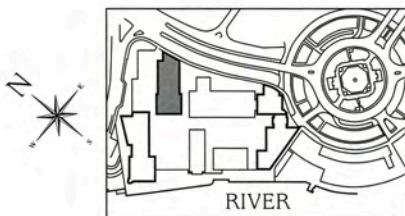
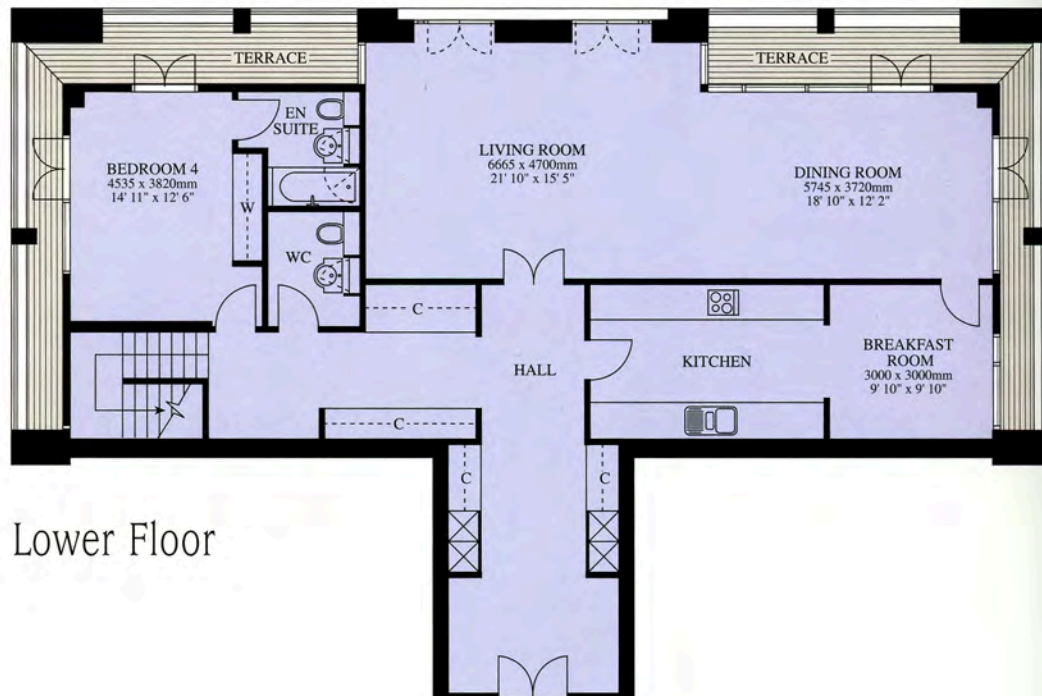
### Availability

Apartment number  
143

Level  
14th/15th floor

Total floor area  
320.2 sq m / 3,447 sq ft

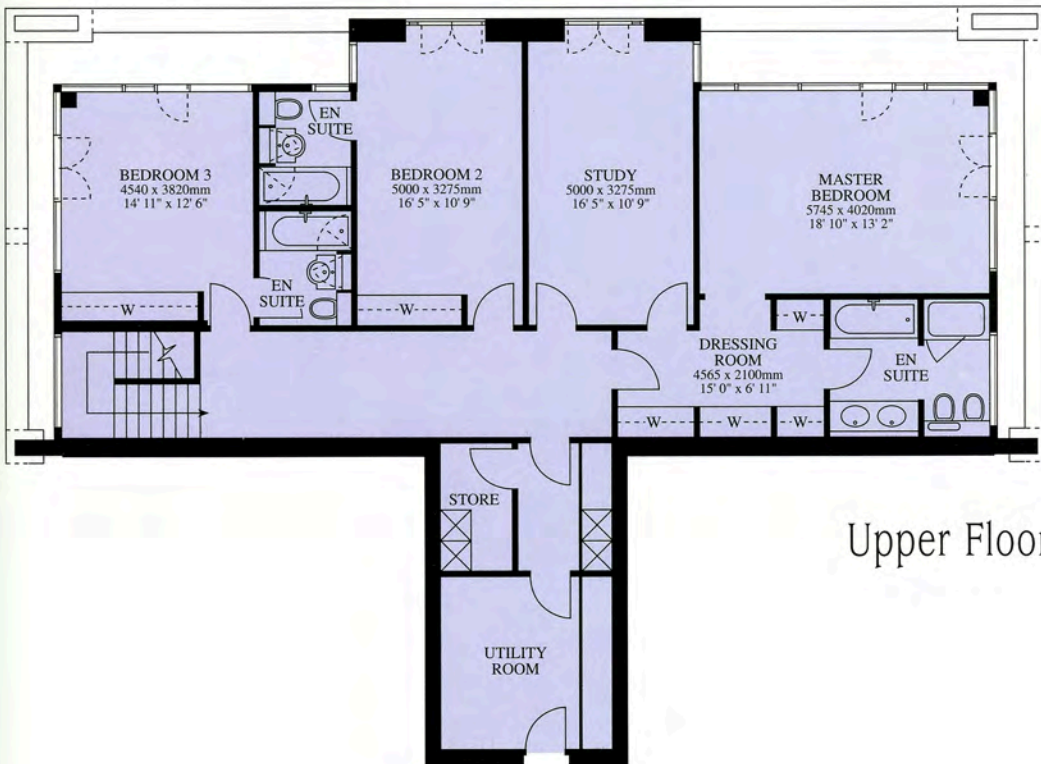
Terrace area  
36.6 sq m / 394 sq ft



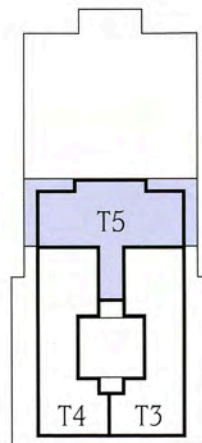
Plans are not to scale. Areas are measured to centre line of party walls/curtain wall. Room dimensions are taken to face of wall and to the back of wardrobes. Key plans are indicative only.

# EATON HOUSE

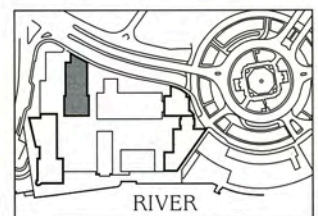
38 Westferry Circus, Canary Wharf, London E14



Upper Floor



Levels 14 & 15



Plans are not to scale. Areas are measured to centre line of party walls/curtain wall. Room dimensions are taken to face of wall and to the back of wardrobes. Key plans are indicative only.

# EATON HOUSE

38 Westferry Circus, Canary Wharf, London E14

## 1 Bedroom apartment Type P8/P8A

## Typical Furniture Layout

### Availability

P8 Apartment number  
12A  
22A  
32A  
42A  
52A

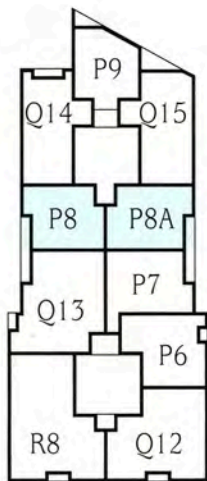
Level  
1st floor  
2nd floor  
3rd floor  
4th floor  
5th floor

P8A Apartment number  
11A - is handed  
21A - is handed  
31A - is handed  
41A - is handed  
51A - is handed

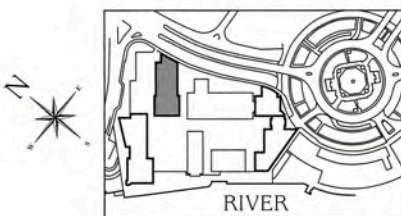
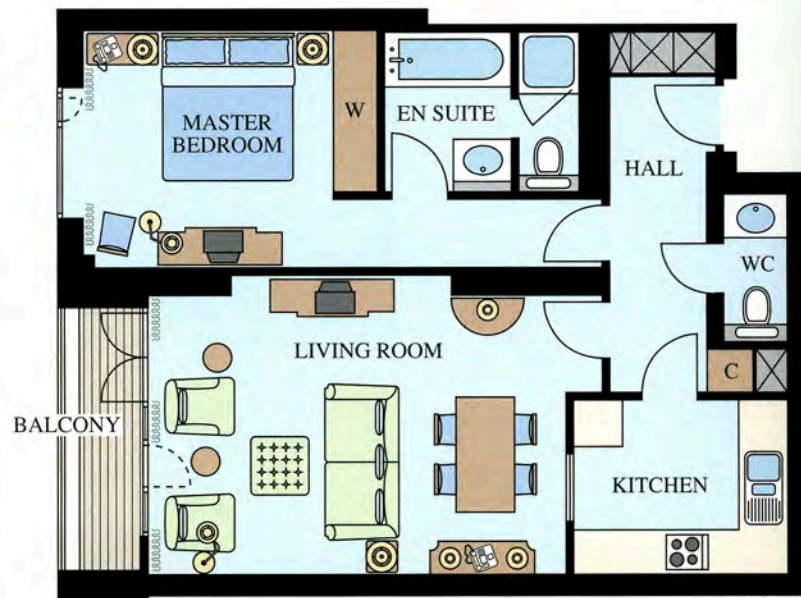
Level  
1st floor  
2nd floor  
3rd floor  
4th floor  
5th floor

Total floor area  
72.3 sq m / 778 sq ft

Balcony area  
4.8 sq m / 52 sq ft



Levels 1, 2, 3, 4 & 5



Plans are not to scale. Areas are measured to centre line of party walls/curtain wall. Room dimensions are taken to face of wall and to the back of wardrobes. Key plans are indicative only.

# EATON HOUSE

38 Westferry Circus, Canary Wharf, London E14

## Typical Furniture Layout

## 2 Bedroom apartment Type Q12/Q12A

### Availability

Q12 Apartment number

11  
21  
31  
41  
51  
61  
71  
81  
91  
101  
111  
121  
131

Level

1st floor  
2nd floor  
3rd floor  
4th floor  
5th floor  
6th floor  
7th floor  
8th floor  
9th floor  
10th floor  
11th floor  
12th floor  
13th floor

Total floor area

125.9 sq m / 1,355 sq ft

Balcony area

2.4 sq m / 26 sq ft

Q12A Apartment number

112 - is handed  
122 - is handed  
132 - is handed

Level

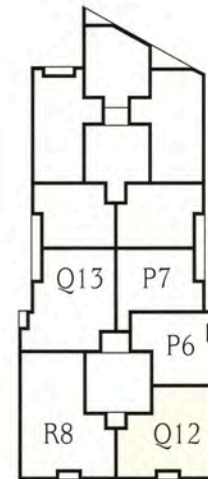
11th floor  
12th floor  
13th floor

Total floor area

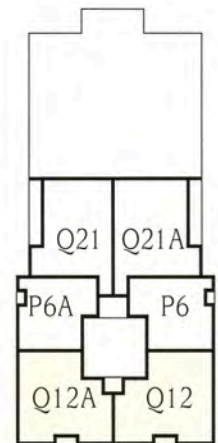
124.7 sq m / 1,342 sq ft

Balcony area

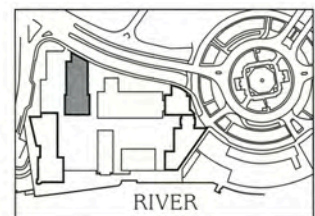
2.4 sq m / 26 sq ft



Levels 1, 2, 3, 4, 5, 6,  
7, 8, 9 & 10



Levels 11, 12 & 13



Plans are not to scale. Areas are measured to centre line of party walls/curtain wall. Room dimensions are taken to face of wall and to the back of wardrobes. Key plans are indicative only.

## CANARY RIVERSIDE



For further details, please call  
the Canary Riverside Information Office in London on  
Tel: +44 (0) 171 512 9393 Fax: +44 (0) 171 515 9373

For further details in Singapore, please call Joyce Ng on  
Tel: 00 65 734 5250 Fax: 00 65 734 1773

### MISREPRESENTATION ACT 1967

Canary Riverside Development Pte. Limited for themselves give notice that: 1. Whilst every care is taken to ensure accuracy these particulars do not constitute, nor constitute part of, any offer or contract and the right to change plans, specifications and materials is reserved. Due to continuous product development individual features may vary. No responsibility is taken for any other error, omission, or mis-statement in these particulars. 2. All statements contained in these particulars as to this property are made without responsibility on the part of Canary Riverside Development Pte. Limited. 3. Purchasers should not rely on them as statements or representations of fact and must satisfy themselves by investigation or otherwise as to correctness of each of them. 4. No person in the employment of Canary Riverside Development Pte. Limited or any other related company has any authority to make or give any representation of warranty whatever in relation to this property. 5. Illustrations are indicative only allowing sufficient time for planting to grow. 6. The names in this brochure are for marketing purposes only and may not be adopted as a postal address. March 1998.