

ParkgateAspen

STATEMENT RE EXTERNAL WALL REMEDIATION

Re: Berkeley Tower, Hanover House, Belgrave Court, Eaton House
Canary Riverside Estate, Westferry Circus, E14 8RH

Our application to the Building Safety Fund is frustratingly still stalled over inconsistencies in the Ministry's treatment of the same sections of external walling between one building and another.


Inexplicably, specific parts were excluded on one building when the identical parts had been approved for the other towers. Together with the project team of architects, project managers and fire engineers, we applied for consistent eligibility to be approved for all four towers. The project team have provided all the supporting plans and specifications requested by the ministry for the appeal process.

For your interest, we have prepared the attached photo schedule showing the extent of the various cladding types affecting each building. The advice of our fire engineering consultant is that the brick cladding / curtain walling making up the vast majority of the façade does not require remediation. However, other ancillary sections including zinc, insulated render, spandrel and infill panels have been deemed combustible, requiring remediation.

In anticipation of a swift and positive BSF determination, we geared up for an immediate commencement of the remediation works. However, given the ongoing delay at the Ministry and current supply-chain disruptions, we are now doubtful that works will commence before Christmas.

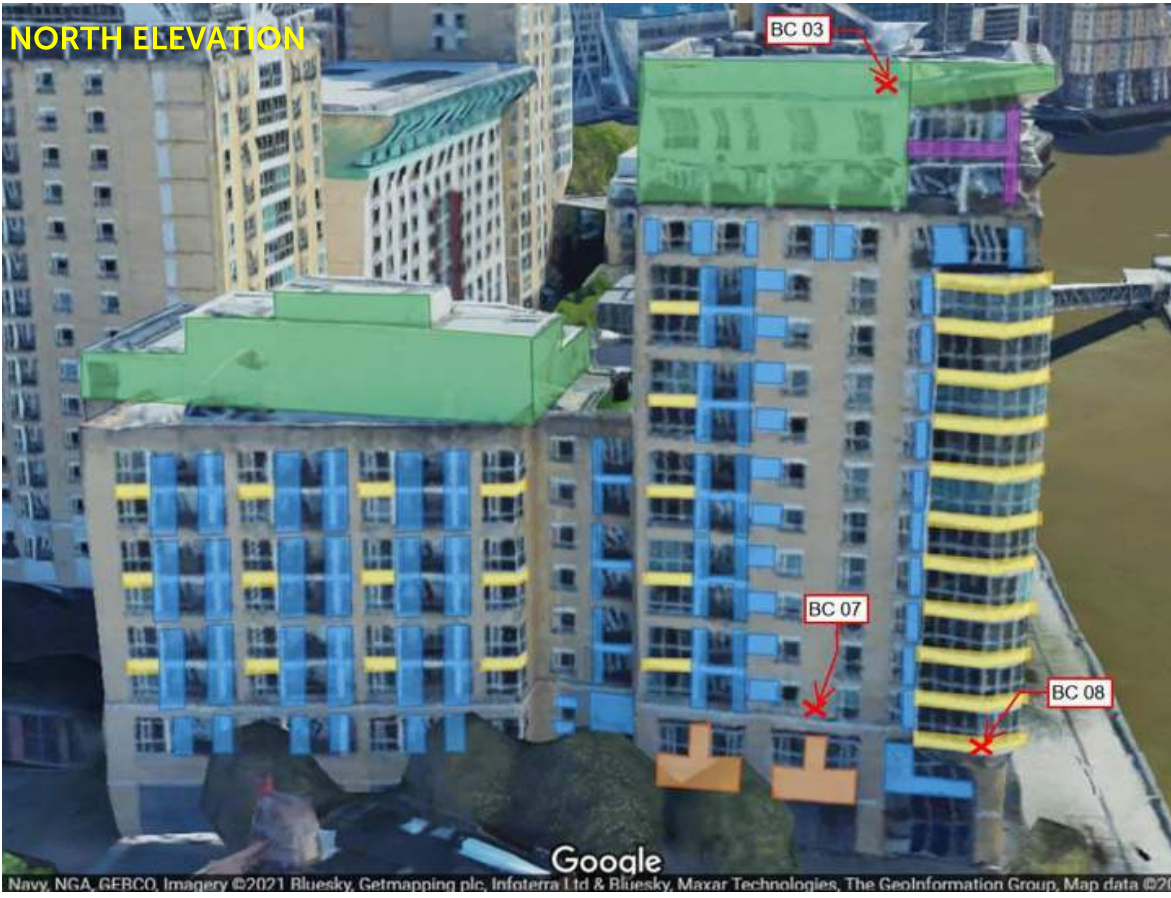
As soon as we have a decision from the Ministry – hopefully the green light, we shall notify you all. Meanwhile if you have any questions, please contact the cladding team via: steven@parkaspen.co.uk

This bulletin is dated 1 October 2021.



Parkgate Aspen Ltd.

BELGRAVE COURT



- Key**
- Concrete Panels
 - Zinc Cladding
 - Insulated Render
 - Spandrel panels
 - Infill panels

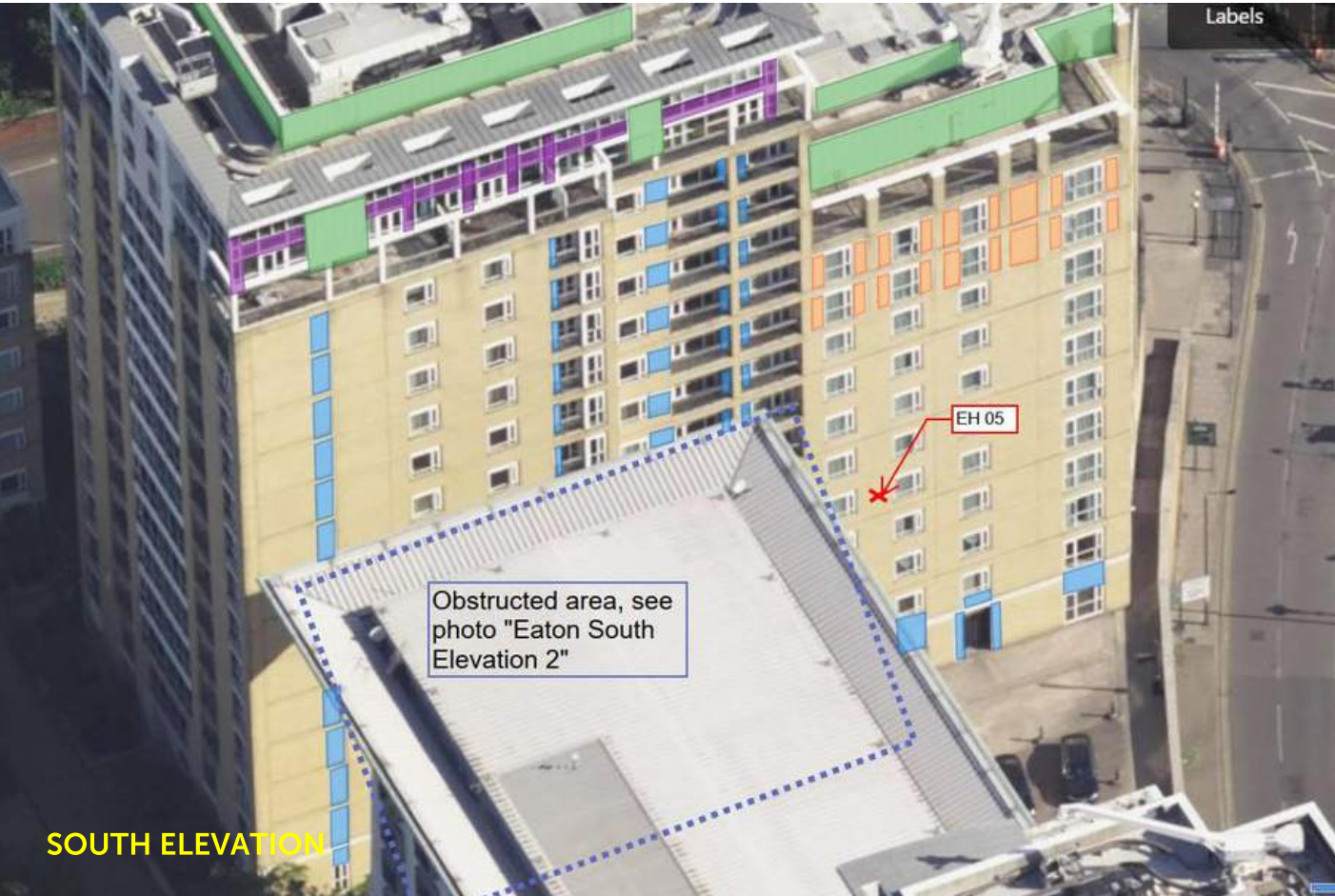
Google
Navy, NGA, GERC, Imagery ©2021 Bluesky, Getmapping plc, Infoterra Ltd & Bluesky, Mazar Technologies, The GeoInformation Group, Map data ©2021

BERKELEY TOWER



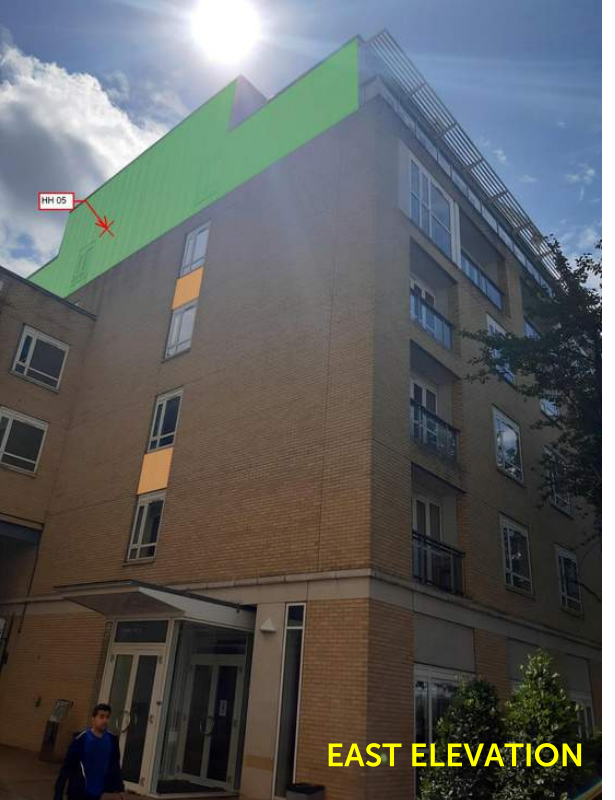
- Key**
- Concrete Panels
 - Zinc Cladding
 - Insulated Render
 - Spandrel panels
 - Infill panels

EATON HOUSE



- Key**
- Concrete Panels
 - Zinc Cladding
 - Insulated Render
 - Spandrel panels
 - Infill panels

HANOVER HOUSE



- Key**
- Concrete Panels
 - Zinc Cladding
 - Insulated Render
 - Spandrel panels
 - Infill panels